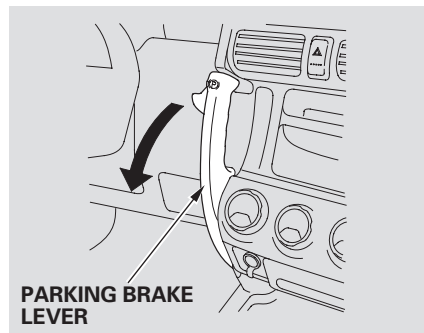
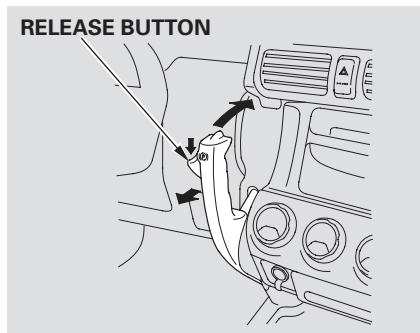


Controls Near the Steering Wheel

Parking Brake



To apply the parking brake, firmly pull the parking brake lever toward you.



To release the parking brake, push and hold the release button on the side of the parking brake lever, pull the lever toward you slightly, then push the lever forward.

The parking brake light on the instrument panel should go out when the parking brake is fully released (see page 66).

NOTICE

Driving the vehicle with the parking brake applied can damage the rear brakes and axles.